

# Lee Mission Cemetery Newsletter

January 2019



## From the President

As the new year starts, the cemetery board has had a few changes with two longtime board members retiring, including the President, so we are trying our best to keep things running as smoothly as it did in the past, and we are thankful for our two new board members.

The year saw us making progress on the diamond square fence project and the grounds of the cemetery being maintained to a higher standard. We currently have groups from Salem First United Methodist Church and The Fairgrounds Stake of The Church of Jesus Christ Latter-day Saints that come and volunteer their services in helping keeping the grounds maintained. If you have a group or you individually are interested in volunteering at the cemetery please contact us.

Unfortunately, the cemetery continues to have vandalism issues at times and since there is not someone there 24/7 it is impossible to catch them; however, we do have Pro Star Security opening and closing the gates and driving through the cemetery.

As always, we appreciate your support and wanted to let you know that 100% of your donations are used for cemetery projects and grounds maintenance and that we are doing our best to be good stewards of the funds that are donated.

*--Tom Bowers, Board President*

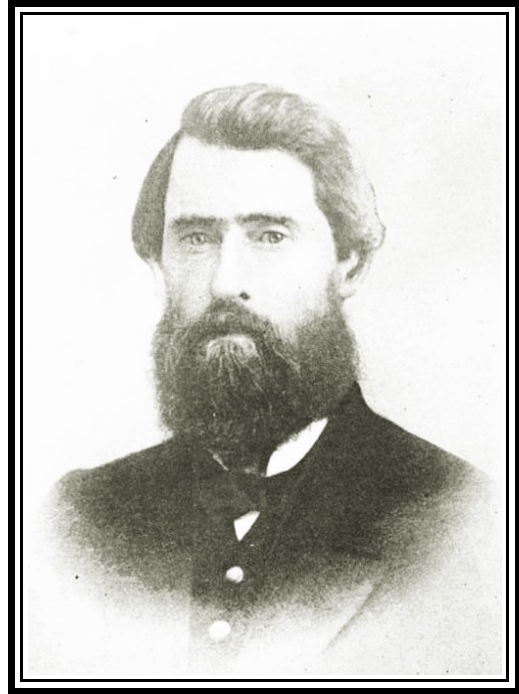
## Diamond Square Update

If you have been out to the cemetery lately, you may have noticed some different fencing around the Diamond Square part of the cemetery. That fencing is part of a much larger and longer story, but I will shorten that story to hopefully explain what is going on.

We are working to rehabilitate the existing historic fencing around Diamond Square, we will be rehabilitating and reinstalling the pieces of the historic fence that have been removed for safety reasons and replicating the parts of the fencing that we no longer have.

The new fencing you currently see at the cemetery was installed as a potential replacement of the original fencing, but because the historic fencing is considered a contributing component to the history of the cemetery it was not an acceptable alternative to the historic fencing.

With that said, we are excited about the project to restore and rehabilitate such an important part of our cemetery and the fabric of our community. We feel Diamond Square is one of the most historically important part of any cemetery in the State of Oregon and we are proud to rehabilitate a fence worthy of surrounding Diamond Square.



Currently we are working with the City of Salem Historic Preservation Officer, Kimberli Fitzgerald, to make sure we are doing the restoration in accordance with best practices for such a project. I have been busy meeting with a number of contractors and getting bids for the project. I am currently putting together the Historic Design Review application for the City of Salem to consider. We have a local supporter, Jeff Harmon, who will be assisting with the project as we move forward.

Our goal is to have the project completed this spring. The fencing around Diamond Square will look new, it will have as much of the original material as possible and the new materials will be as authentically accurate as we can possible make it.

I would like to thank everyone who supports the cemetery and hope that you enjoy the fencing around Diamond Square once it is done.

*--Sean O'Harra, Member, Board of Directors*

## Note on a Mystery Solved in the Cemetery

In the January 2018 issue of our Newsletter, we described how Dr. Michael McKenzie, Associate Professor of Philosophy and Religion at New York's Keuka College, investigated the re-interrment of Ann Wilbur from an old defunct pioneer cemetery in Portland, to Lee Mission in 1892 (she had passed in 1851).

Ann was James and Lucretia Wilbur's only child. She died in childbirth. James Wilbur was an important Methodist clergyman of the 19th-century.

Ann's actual burial site in Lee Mission Cemetery was found by utilizing GPR (Ground Penetrating Radar) over the Wilbur family plot, and the information found there, along with corroborating newspaper coverage, confirmed Ann's burial.

However, there was no grave marker and fundraising was not forthcoming, so Dr. McKenzie purchased the grave marker himself.

We extend grateful thanks to Dr. McKenzie for solving this mystery and for honoring Ann.

You may read more about the process to find the grave and about the Wilburs at these web sites:

[www.keuka.edu/stories/research-qa/finding-ann-wilbur](http://www.keuka.edu/stories/research-qa/finding-ann-wilbur)

[www.oregonpioneers.com/bios/JamesWilbur\\_1846.pdf](http://www.oregonpioneers.com/bios/JamesWilbur_1846.pdf)



## **Cemetery Rules and Regulations:**

When a grave site is purchased, a deed is sent to the purchaser with a copy of the rules and regulations. These maintenance rules are also posted in the Cemetery. We ask that you not leave food items, glass containers, or items that may provide a hazard on the graves. The cemetery does not have garbage service. Any resulting garbage has to be removed by volunteers and disposed of. When you are replacing flowers please bring a garbage bag with you and take the resulting garbage home to your personal garbage receptacle for pickup. Anyone wishing a full copy of the rules and regulations can contact the cemetery and a copy will be provided. The section pertaining to maintenance is provided below:

## **Maintenance Rules and Regulations:**

- 1) Artificial flowers and decorations may be used only from October through March. During the months of April through September only fresh flowers may be placed on the graves. The cemetery association maintains the right to remove any article, planting or keepsake which is not consistent with the historical, natural and maintenance needs of the cemetery.
2. No plantings or shrubs will be allowed without written approval of the Board of Directors of the Cemetery. No fencing or other structures are allowed on graves.
3. Cemetery personnel are empowered to remove, at their discretion, any plantings found on any grave or lot. Any trees or shrubs not authorized or posing a threat to the surrounding graves or markers may be removed by the Cemetery Association.
4. The Cemetery is open for the public's use. From time to time the gates may remain locked due to weather related damage to trees and roadways. It is the intention to allow access as much as possible.
5. All persons using the cemetery are expected to remove any trash or remains from any plastic or artificial decorations which have been placed as a part of their visit.

## **Donations**

Lee Mission Cemetery is a 501(c)13 not-for-profit corporation. All donations are tax deductible. 100% of donations made to the Cemetery go toward improvement and maintenance.

Officers and board members volunteer their time and receive no compensation.

Lee Mission Cemetery P O Box 2011 Salem,  
OR 97308

Lee Mission Cemetery is licensed through  
the Oregon State Mortuary Board  
Phone: 971-673-1500

## **Board of Directors**

Tom Bowers , President  
Sherrill Hochspeier, Secretary-Treasurer  
Phyllis Gillis  
Margaret Stephens  
Sean O'Harra  
Julie Staten  
Michael Staten

Contact Information: Lee Mission Cemetery  
(503) 851-1803  
Lot Sales: Rick (503) 559-2242  
Web Site: [www.leemissioncemetery.com](http://www.leemissioncemetery.com)  
Comments, additions and corrections  
regarding website or newsletter can be sent to  
[s.a.hochspeier@comcast.net](mailto:s.a.hochspeier@comcast.net)

LEE MISSION CEMETERY  
DONATIONS

JUNE 1, 2018 – DECEMBER 31, 2018

*Thank you to our donors!*

**Friend Up to \$49**

- Peter J. Dane
- Ernest & Karen Heuberger
- Will & Dee Turner – *in memory of Alanson Beers*

**Supporter \$50 – 99**

- Paul V. LaRue – *in memory of Craig & Ruth Marlett*
- Kay Bell – *in memory of Sophia Laue Kroeplin*
- Wanda E. Blanding - *in memory of Robert Blanding*
- Gary Ray – *in memory of Nels M. & Marie Hansen*
- Cynthia Woodroof – *in memory of Dorthea Tanzer*
- James and Ruth Hoss
- Paul & Tracey Saucy
- Ken L. Betterton
- Bill & Mary Mainwaring

**Sponsor \$100 – 249**

- Erin Hanni – *in memory of Phil & David Hanni*
- Albert & Virginia Furtwangler
- Jean W. Hand
- George L. Knox

**Preservation \$250-499**

- Patricia H. Clark – *in memory of Ned Clark*
- Phyllis L. Gillis – *in memory of Richard M. Gillis*
- Kathryn A. Karr – *in memory of Bert & Ada Karr*
- Regina & Conrad Mueller

**Historian \$500 – 2499**

- Marilyn J. Wright – *in honor of Anna Maria Pittman Lee*
- Otto Friedrich & Cora Hallauer
- Wilbur & Lela Jackson

**Guardian \$2500+**





*Lee Mission Cemetery  
PO Box 2011  
Salem, OR 97308*